

Mystic Aquarium Fish and Invertebrates

John Smigel

January 2017





Mystic Aquarium Tank Summary

Fresh and Brackish Water Tanks

- T1 – Brackish Water Silver Mooney Cylindrical
- T2 – Fresh Water Amazon Rain Forest L-Shaped
- T3 – Fresh Water Tank Fish and Plants
- T4 – Fresh Water Electric Eel
- T5a – Fresh Water Aggressive Fish
- T6a – Where River Meets the Sea - Brackish Artificial Reef
- T6b – Fresh Water Plants and Angelfish
- J5 – Snapping Turtle
- T25 – African Rift Lake, Large Fresh Water Tank of Cichlids
- T30 – Fresh Water Catfish and Junk Cleanup

Marine Tanks

- J3 – Mermaid’s Purse, Baby Rays and Sharks
- J4 – Clownfish
- C2-C6 – Jellyfish
- C7 – Bow Front Tank and Glass Art
- T7 – Large Cylindrical Tank 35,000 gallons

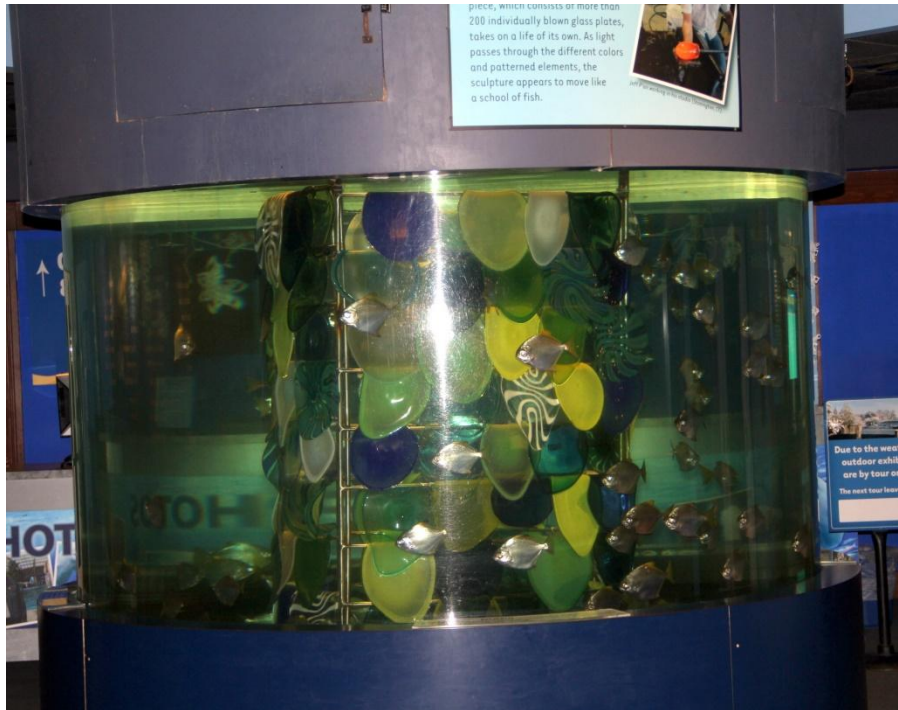
T9b – Burrfish
 T10 – Eels and Barracudas
 T10b – Lobster and Lumpfish Tank
 T11 – Live Reef Tank
 T12a – Flounder
 T12b – Giant Clam Reef Tank
 T13 – Kelp Forest with Garibaldi, Sharks
 T14 - Octopus
 T15 – Hidden in the Reef (shrimp, coral)
 T16 – Predators of the Reef
 T17 – Shark Encounters - Shark Touch Pool
 T22 – Loggerhead Sea Turtle
 T24 – White’s Seahorses
 T26 – Indo-Pacific Coral Reef Tank
 T27 – Frogfish
 DL - Discovery Lab Cold Water Touch Tank, Crabs, Skates, Lobsters
 North Pool – Charlotte Green Sea Turtle, Rays, Wobbegong Shark
 South Pool – Sand Tiger Sharks and Nurse Sharks
 Ray Touch Pool - Rays

Table of Contents

Tank T1 – Cylindrical Tank with Mono Fish and Artwork.....	1
Tank T2 – Amazon Rain Forest.....	2
Tank T3 – Fresh Water Plants and Fish.....	6
Tank T4 – Electric Eel	8
Tank T5a – Fresh Water Aggressive Fish	9
Tank T6a – Where River Meets the Sea	11
Tank T6b - Fresh Water Plants and Angelfish	16
Tank J5 - Snapping Turtle	18
Tank 25 – African Rift Lakes – Cichlids.....	19
Tank T30 – Clean Up Junk.....	21
Tank J3 – The Mermaid’s Purse	24
Tank J4 – Clownfish and Anemones	28
Tanks C2 to C6 - Jellyfish	30
Tank C7 – Bowfront	35
Tank T7 – Large Artificial Reef Tank	39

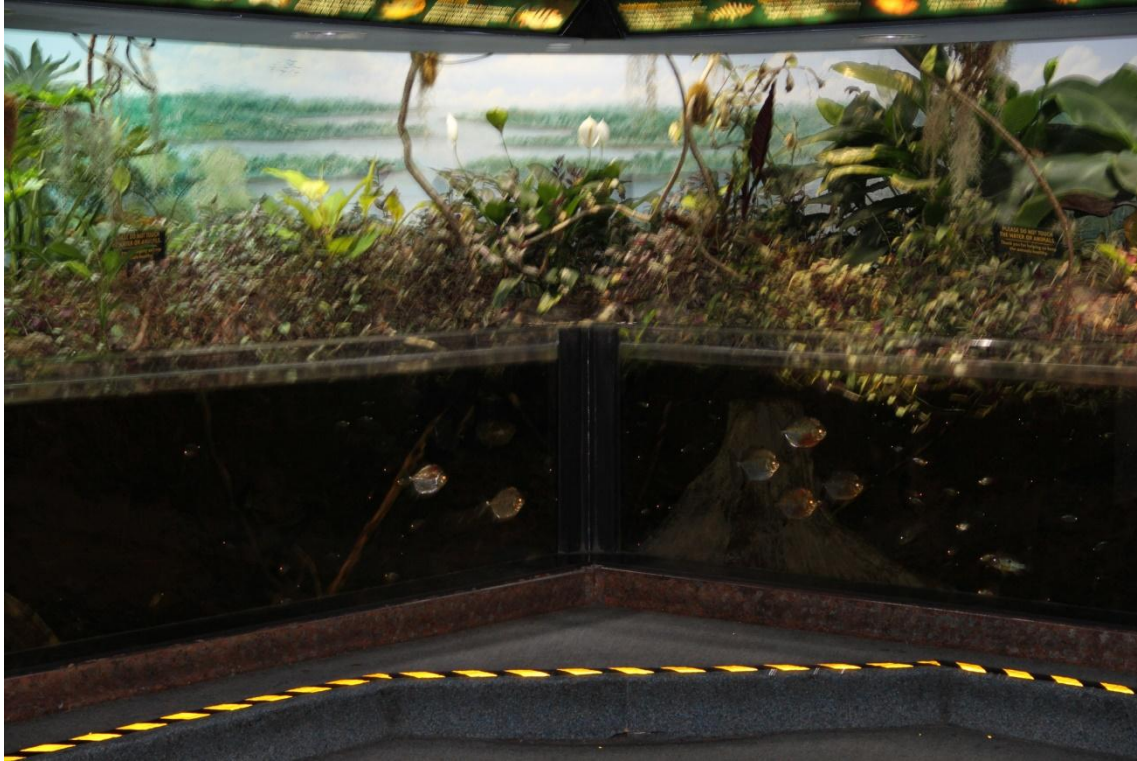
Tank T9b – Striped Burrfish.....	49
Tank T10 – Moray Eels & Barracudas	50
Tank T11 – Live Coral Reef.....	51
Tank T12b – Giant Clam and Live Coral	54
Tank T13, Large Curved Tank with Artificial Kelp.....	57
Tank T14, Octopus	58
Tank T15 – Live Coral.....	59
Tank T16 - Predators of the Reef.....	60
Tank T17 – Shark Encounters – Shark Touch Pool.....	65
Tank T22 – Loggerhead Sea Turtle	68
Tank T24 - Sea Horses.....	69
Tank T26 – Indo-Pacific Coral Reef.....	71
Tank T27 – Frogfish	81
Tank DL - Discovery Lab.....	82
Tank North Pool – Green Sea Turtle, Rays, and Shark	86
Tank South Pool – Sharks.....	90
Marine Fish Profile References	1

Tank T1 – Cylindrical Tank with Mono Fish and Artwork



Mono or Silver Moony, *[Monodactylus argenteus](#)*

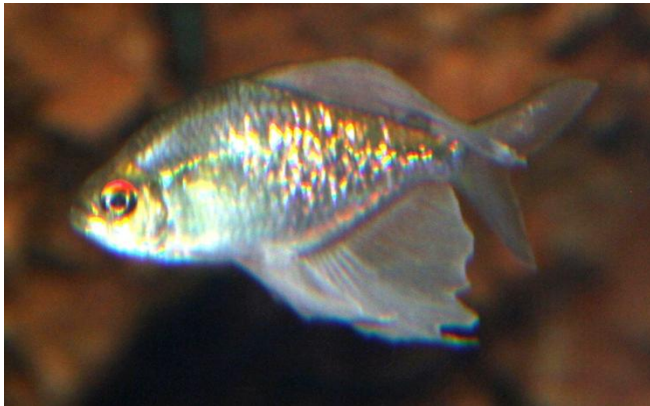
Tank T2 – Amazon Rain Forest



Chocolate Cichlid, [*Hypselecara temporalis*](#)



Columbian Tetra, [*Hyphessobrycon columbianus*](#)



Diamond Tetra, [*Moenkhausia pittieri*](#)



Flag Cichlid, [*Mesonauta festivus*](#)



Pearl Cichlid, *[Geophagus brasiliensis](#)*



Pictus Catfish, *[Pimelodus pictus](#)*

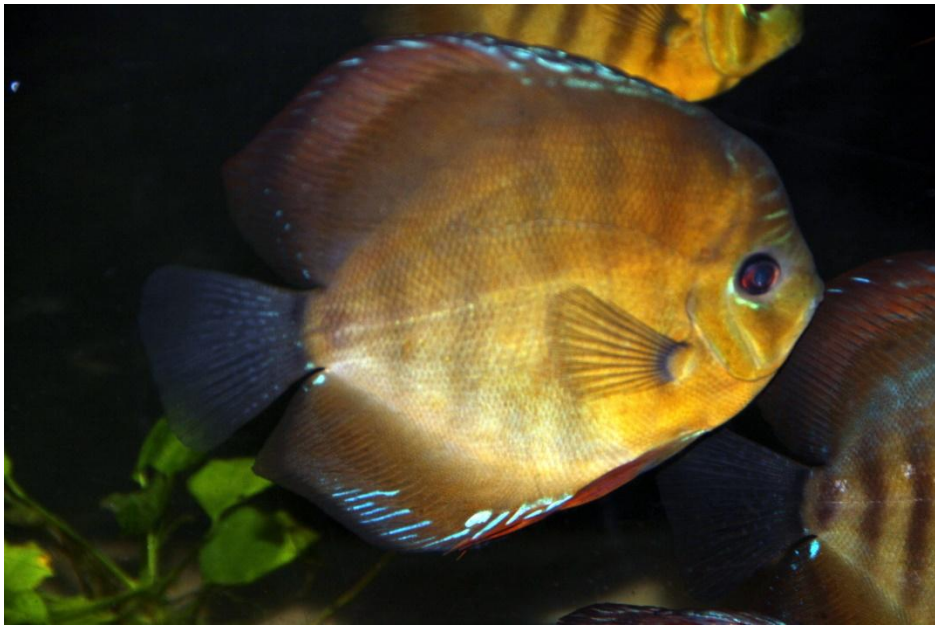
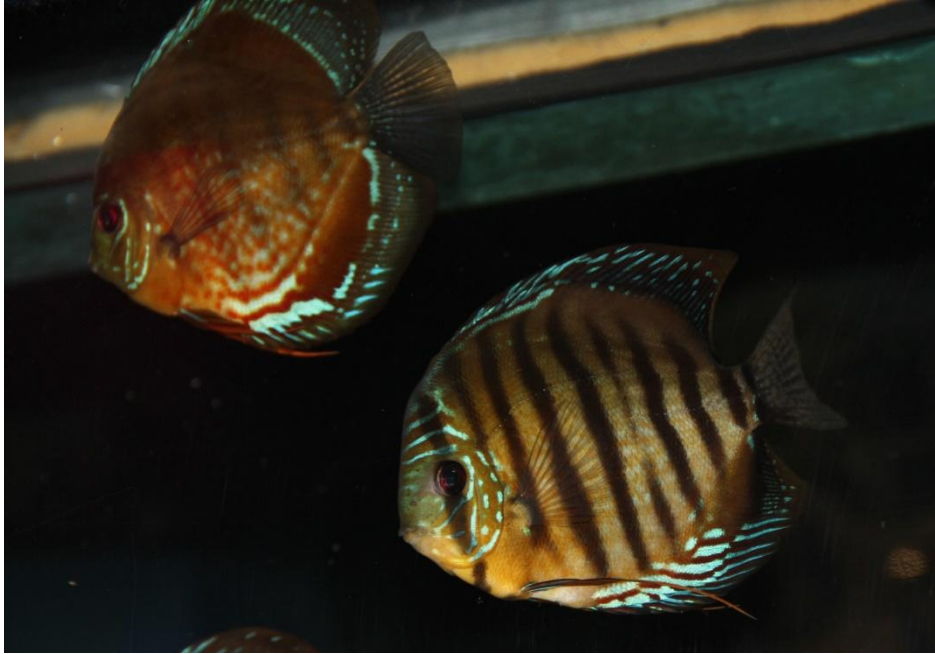


Redhook Silver Dollar, *Myloplus rubripinnis*



Pleco, *species?*

Tank T3 – Fresh Water Plants and Fish



Discus, *Symphysodon aequifasciata*



Rummy-nose Tetras, [*Hemigrammus bleheri*](#)



Whiptail Catfish, [*Farlowella acus*](#)

Tank T4 – Electric Eel



Electric Eel, [*Electrophorus electricus*](#)

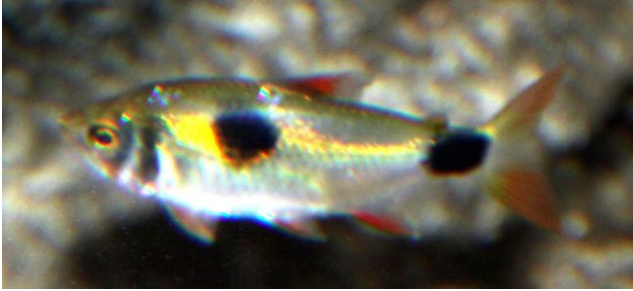
Tank T5a – Fresh Water Aggressive Fish



Red-bellied Piranha, Banded Leporinus, and Bucktooth Tetra



Banded Leporinus, [*Leporinus fasciatus*](#)



Bucktooth Tetra, *Exodon paradoxus*



Red-bellied Piranha, *Pygocentrus nattereri*

Tank T6a – Where River Meets the Sea





Caribbean Blue Tang, *Acanthurus coeruleus*?



French Angelfish (Juvenile), *Pomacanthus paru*



Hi-Hat, *Equetus acuminatus*



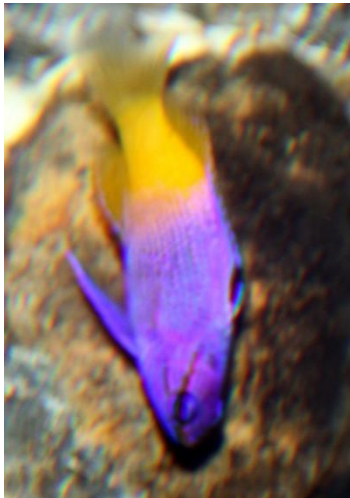
Reef Butterflyfish, *Chaetodon sedentarius*



Purple Dottyback, *Pseudochromis porphyreus?*



Queen Angel, *Holocanthus ciliaris*



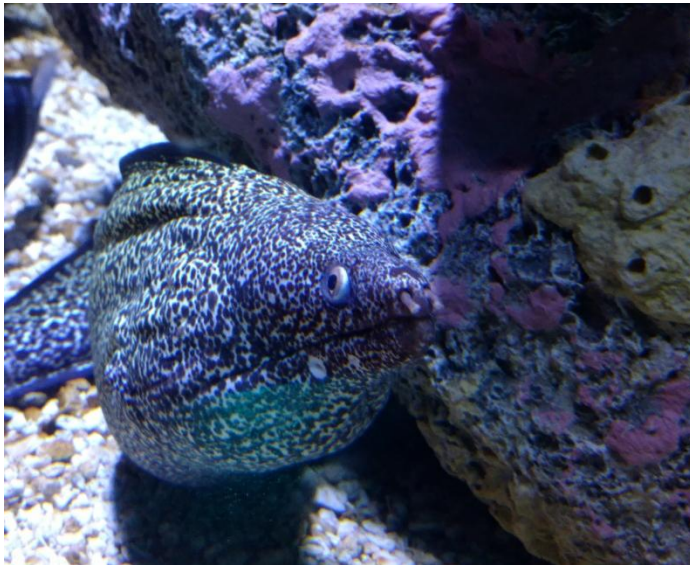
Royal Gramma, *Gramma loreto*



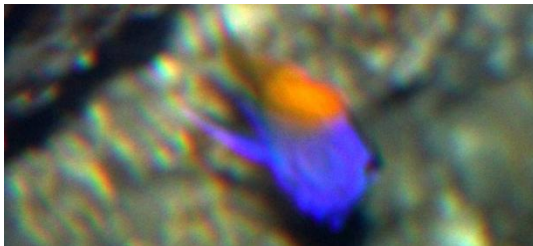
Sergeant Major, *Abudefduf saxatilis*



Spanish Hogfish, *Bodianus rufus*



Spotted Moray Eel, *Gymnothorax moringa*



Orange-Back Fairy Wrasse, *Cirrhitilabus aurantidorsalis*? (Need better photo)

Tank T6b - Fresh Water Plants and Angelfish



Altum Angelfish, [*Pterophyllum altum*](#)



Sailfin Tetra, [*Crenuchus spilurus*](#)

Tank J5 - Snapping Turtle



Common Snapping Turtle (Stretch), *Chelydra serpentina*

Tank 25 – African Rift Lakes – Cichlids



Red Zebra Cichlid (Female), *Maylandia estherae*?



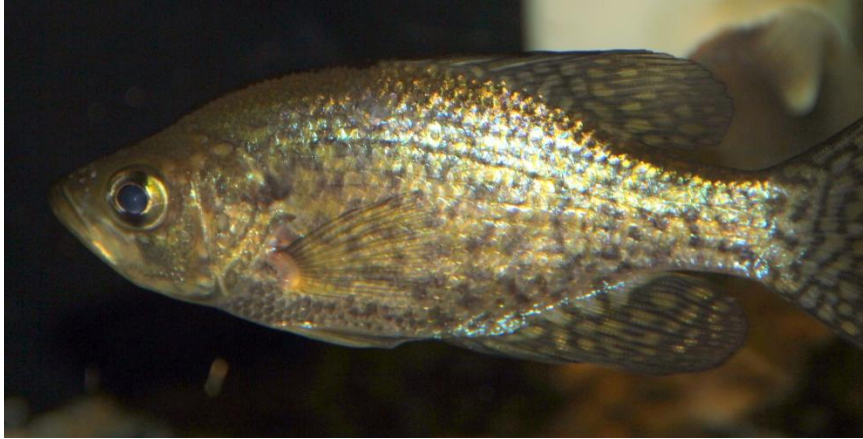
Red Zebra Cichlid (Female), *Maylandia estherae*?



Red Zebra Cichlid (Male), *Maylandia estherae*?

Tank T30 – Clean Up Junk





Black Crappie, [*Pomoxis nigromaculatus*](#)

Need Picture

Bluegill, [*Lepomis macrochirus*](#)



Brown Bullhead, [*Ameiurus nebulosus*](#) (Need a better picture)



Pumpkinseed, [*Lepomis gibbosus*](#)



White Perch, [*Morone americana*](#)



Yellow Perch, [*Perca flavescens*](#)

Tank J3 – The Mermaid’s Purse



Egg Cases, Baby Cat Shark and Skates



Chain Dogfish – Cat Shark, [*Scyliorhinus retifer*](#)



Common Sea Star (Starfish), [*Asterias rubens*](#)



Sea Urchin, *Species?*



Winter Skate, *Leucoraja ocellata*



Mermaid's Purse – Live Egg Case

Tank J4 – Clownfish and Anemones



Black Ocellaris Clownfish, [*Amphiprion ocellaris*](#)



Ocellaris Clownfish (Nemo), [*Amphiprion ocellaris*](#)

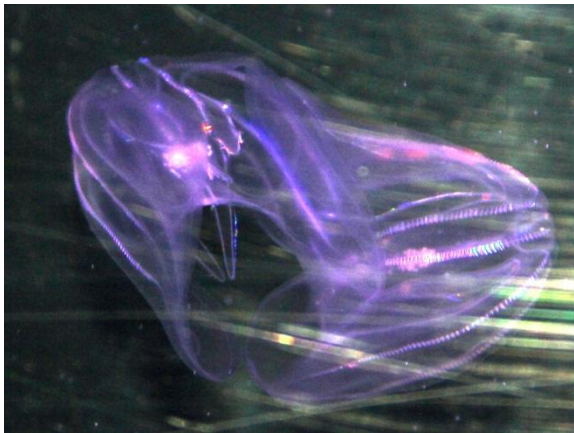


Pink Skunk Clownfish, [*Amphiprion perideraion*](#)

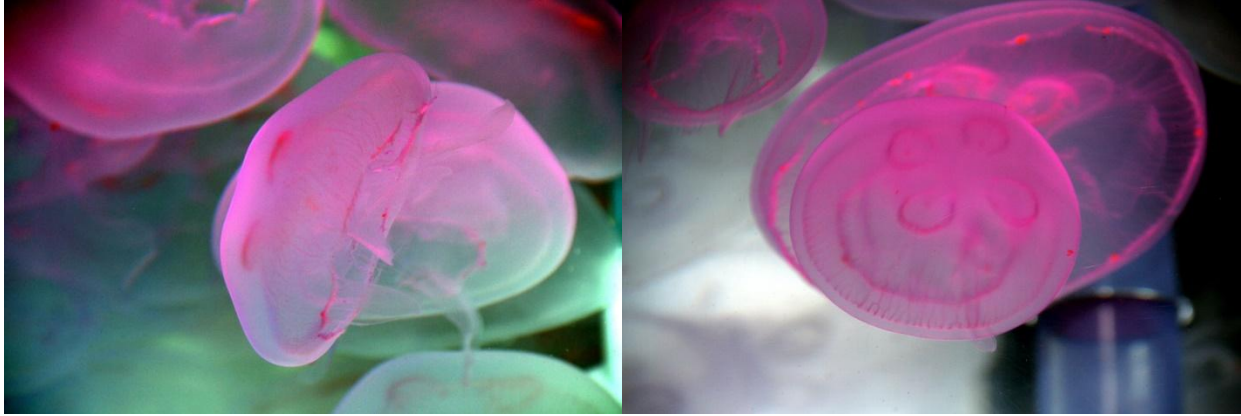
Tanks C2 to C6 - Jellyfish



Atlantic Sea Nettles, *Chrysaora quinquecirra*



Comb Jellies, *Mnemiopsis leidyi*



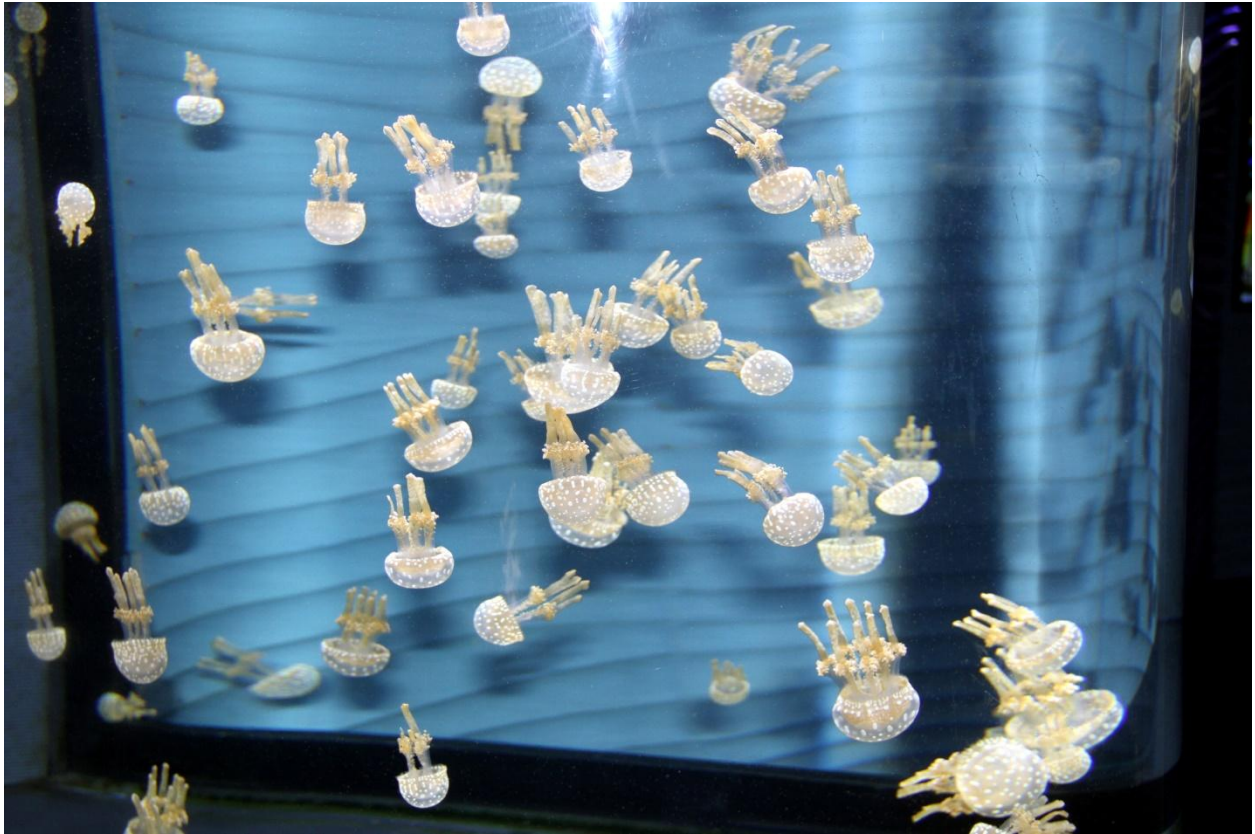
Moon Jellies, [*Aurelia aurita*](#)



Moon Jellies, [*Aurelia aurita*](#)



South American Sea Nettle, [*Chrysaora plocamia*](#)



Spotted Lagoon Jellies, [*Mastigias papua*](#)



Spotted Lagoon Jellyfish, [*Mastigias papua*](#)

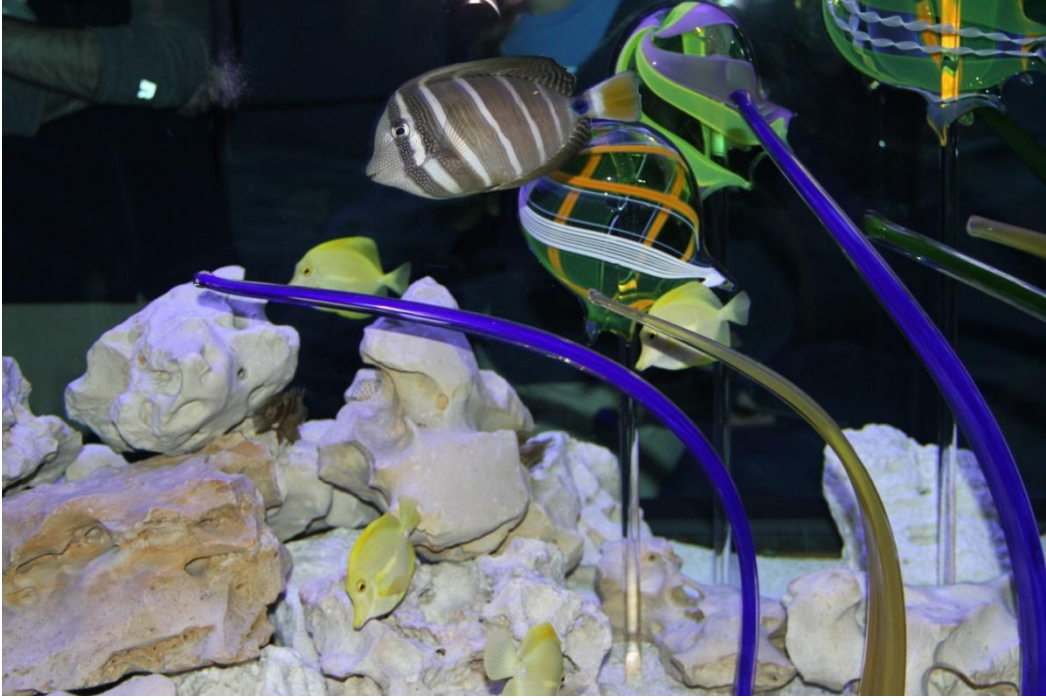


Umbrella Jellyfish, [*Eutonina indicans*](#)



Upside-down Jellyfish, [*Cassiopeia samochana*](#)

Tank C7 – Bowfront





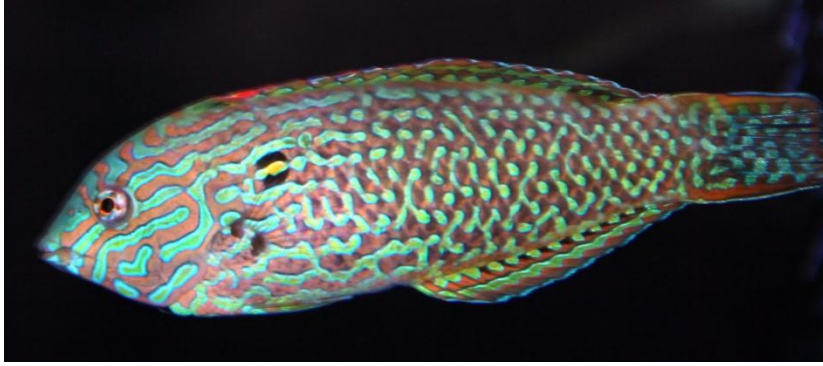
Desjardin's Sailfin Tang, [*Zebrasoma desjardinii*](#)



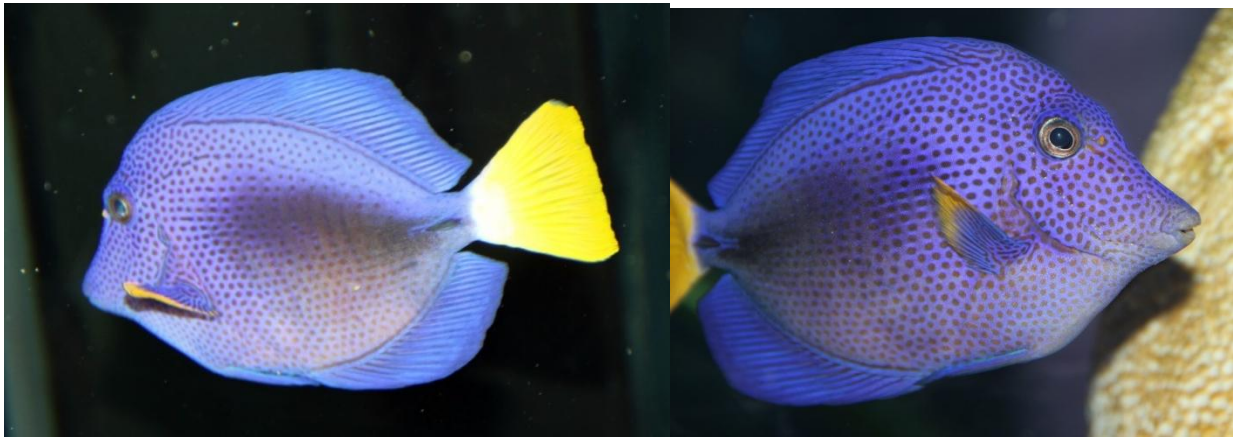
Fuzzy Dwarf Lionfish, [*Dendrochirus brachypterus*](#)



Hoeven's Wrasse (Male), [*Halichoeres melanurus*](#)



Hoeven's Wrasse, *Halichoeres melanurus*



Purple Tang, *Zebrasoma xanthurum*



Weedy Scorpionfish, *Rhinopias frondosa*



Yellow Tang, *Zebrasoma flavescens*

Tank T7 – Large Artificial Reef Tank



Blackbar Soldierfish, [*Myripristis jacobus*](#)



Blue Striped Grunt, [*Haemulon sciurus*](#)



Blue Tang, [*Acanthurus coeruleus*](#)



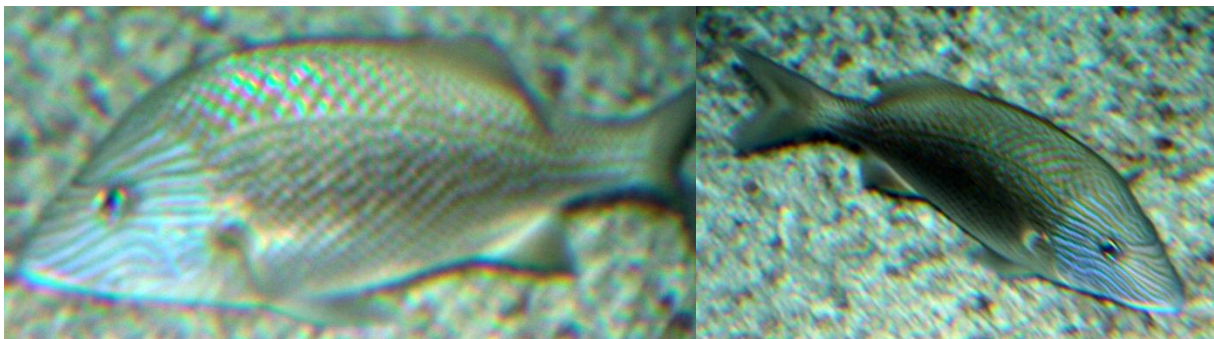
Doctorfish, [*Acanthurus chirurgus*](#)



French Angelfish, *Pomacanthus paru*



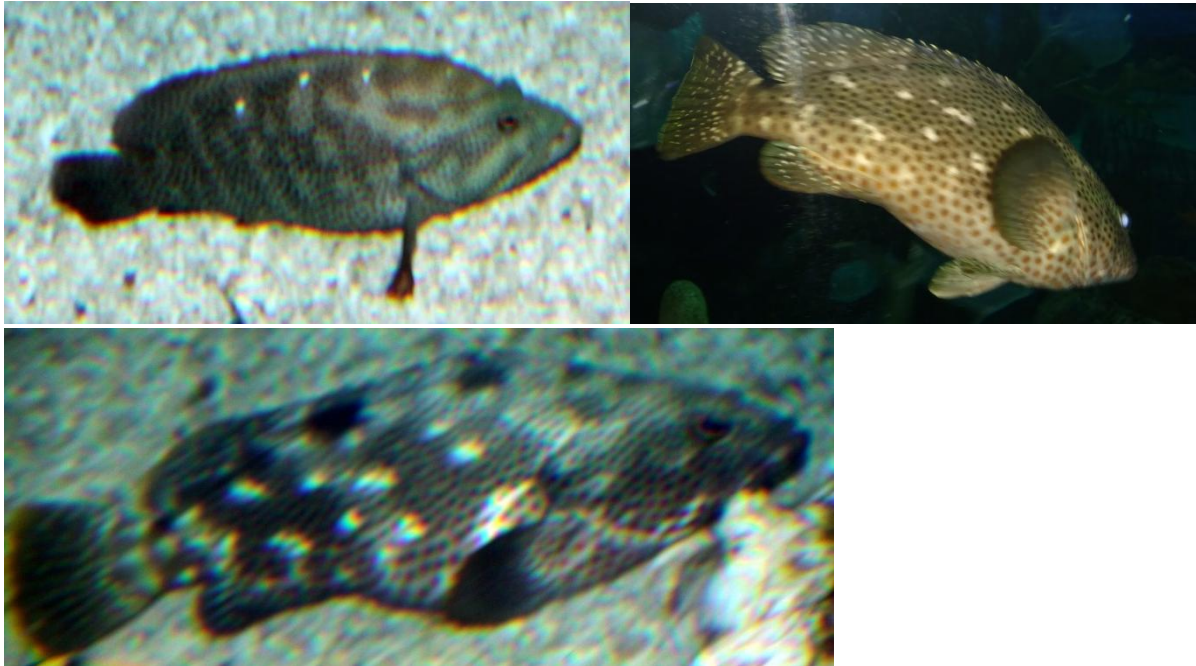
French Angelfish (Juvenile), *Pomacanthus paru*



French Grunt, *Haemulon flavolineatum*



Gray Angelfish, *Pomacanthus arcuatus*



Graysby Grouper, *Cephalopholis cruentata*



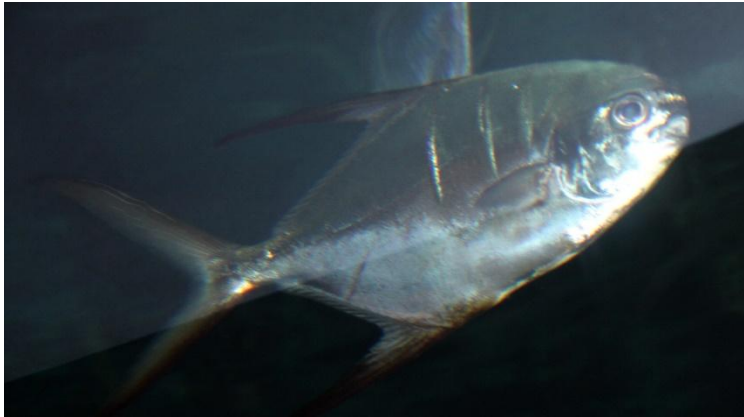
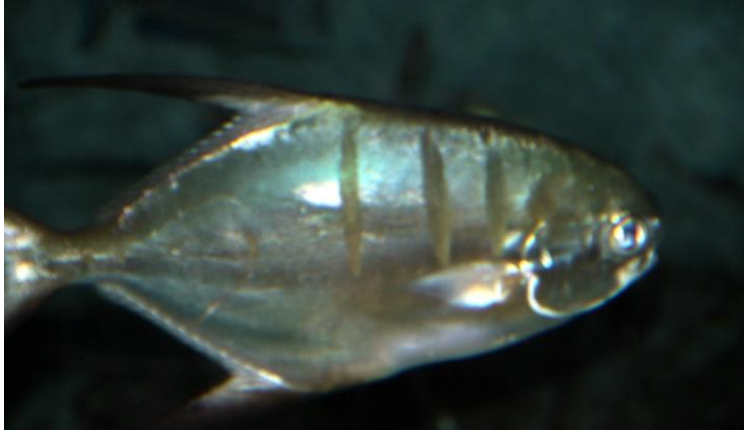
Longspine Squirrelfish, [*Holocentrus rufus*](#)



Lookdowns, [*Selene vomer*](#)



Moray Eels (Poncho & Ernie), [*Gymnothorax funebris*](#)



Palometa, *Trachinotus goodei*



Porkfish, *Anisotremus virginicus*



Queen Angelfish, *Holacanthus ciliaris*



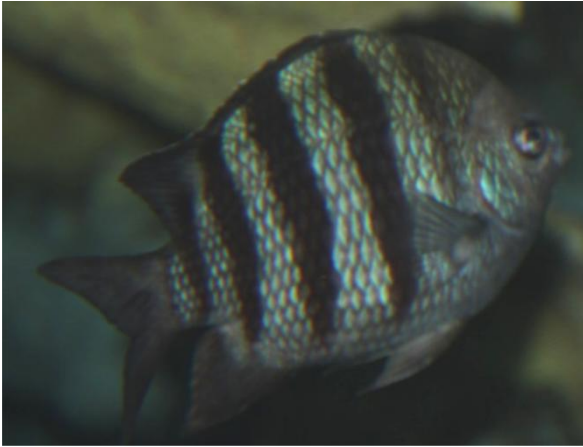
Queen Trigger (Queenie), *Balistes vetula*



Red Lionfish (Melvin), *Pterois volitans*



Rock Beauty, *Holacanthus tricolor*



Sergeant Major, *Abudefduf saxatilis*



Spanish Hogfish, *Bodianus rufus*



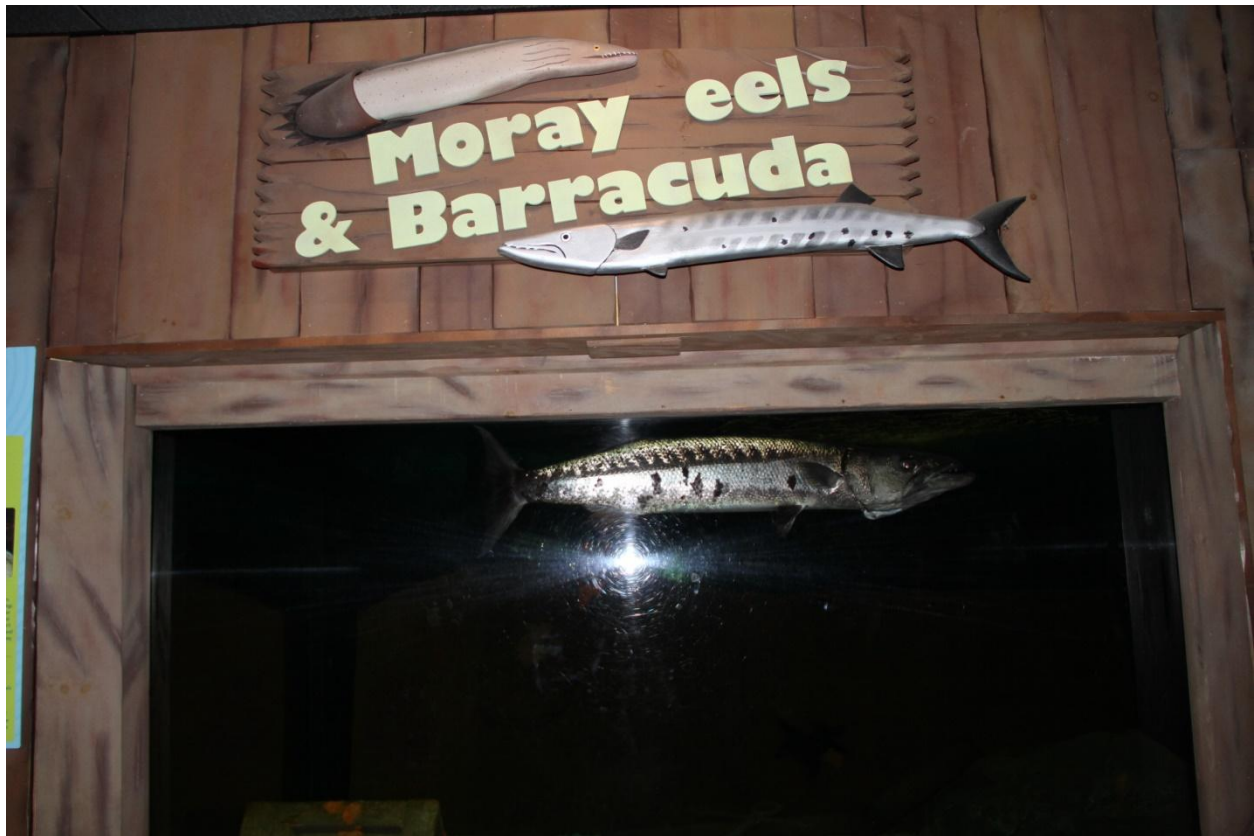
Spotted Puffer (Milton), [*Diodon hystrix*](#)

Tank T9b – Striped Burrfish



Striped Burrfish, [*Chilomycterus schoepfi*](#)

Tank T10 – Moray Eels & Barracudas



Great Barracuda, *Sphyraena barracuda*



Moray Eels, Purplemouth - *Gymnothorax vicinus*, Green - *Gymnothorax funebris*

Tank T11 – Live Coral Reef



Firefish Goby, [*Nemateleotris magnifica*](#)



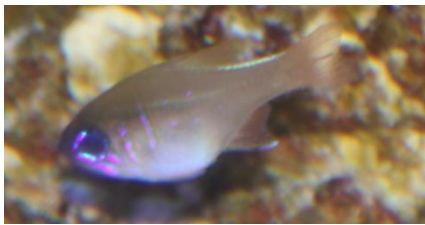
Black Ocellaris Clownfish, *[Amphiprion ocellaris](#)* and Copperband Butterflyfish, *[Chelmon rostratus](#)*



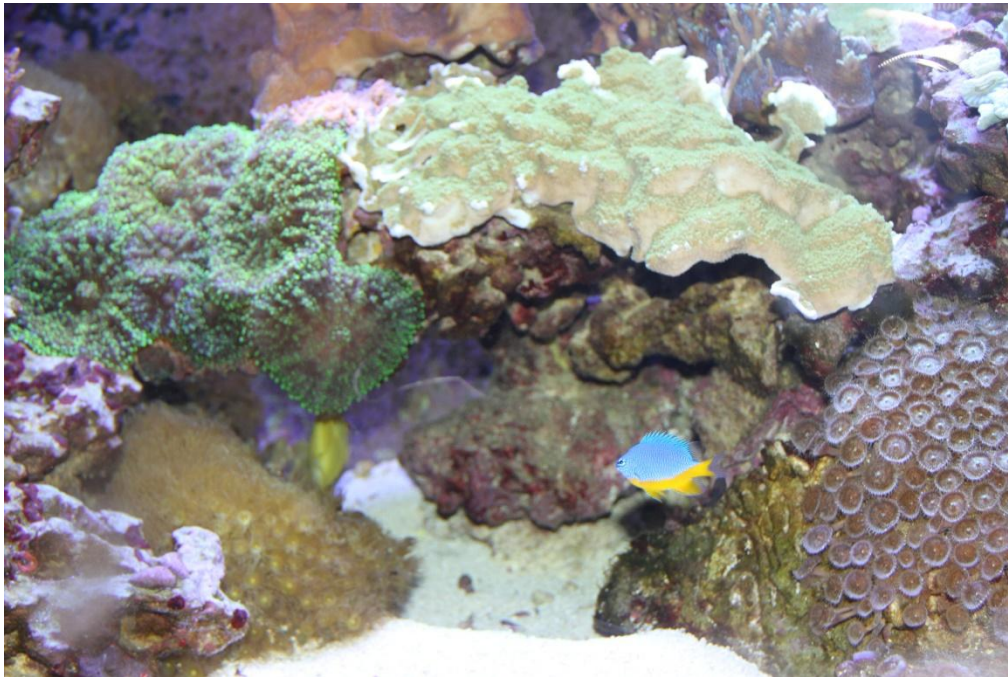
Purple Dottyback, *[Pseudochromis porphyreus](#)*



Yellow Tang, *Zebrasoma flavescens*



Purple Dottyback, *Pseudochromis porphyreus*?



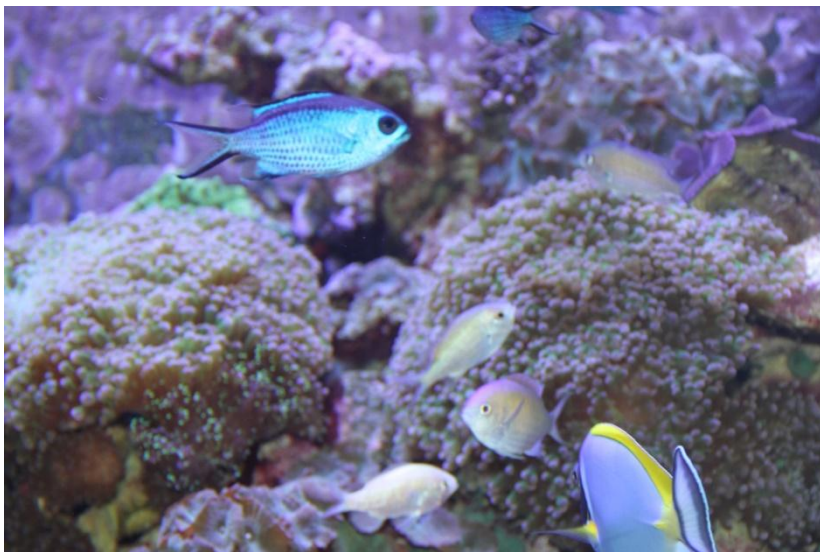
Azure Damselfish, *Chrysiptera hemicyanea*

Tank T12b – Giant Clam and Live Coral



Tridacna Giant Clam, *Tridacna squamosa*?





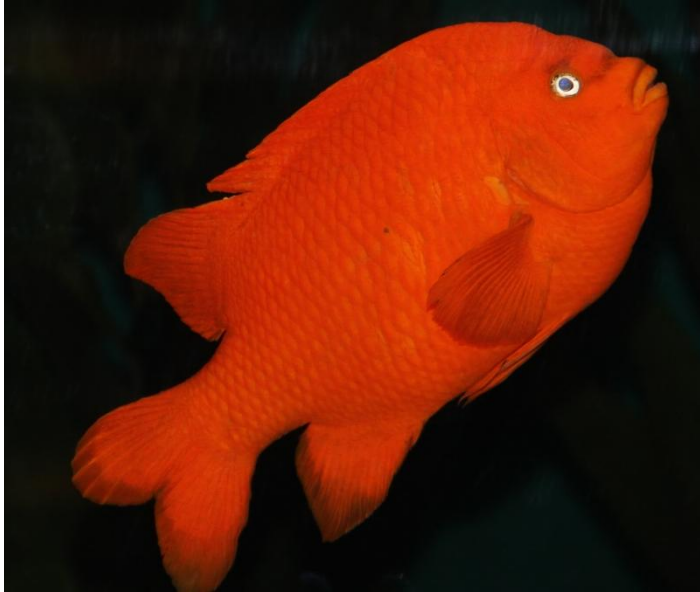


Blue Reef Chromis, [*Chromis cyaneus*](#)



Powder Blue Tang, [*Acanthurus leucosternon*](#)

Tank T13, Large Curved Tank with Artificial Kelp

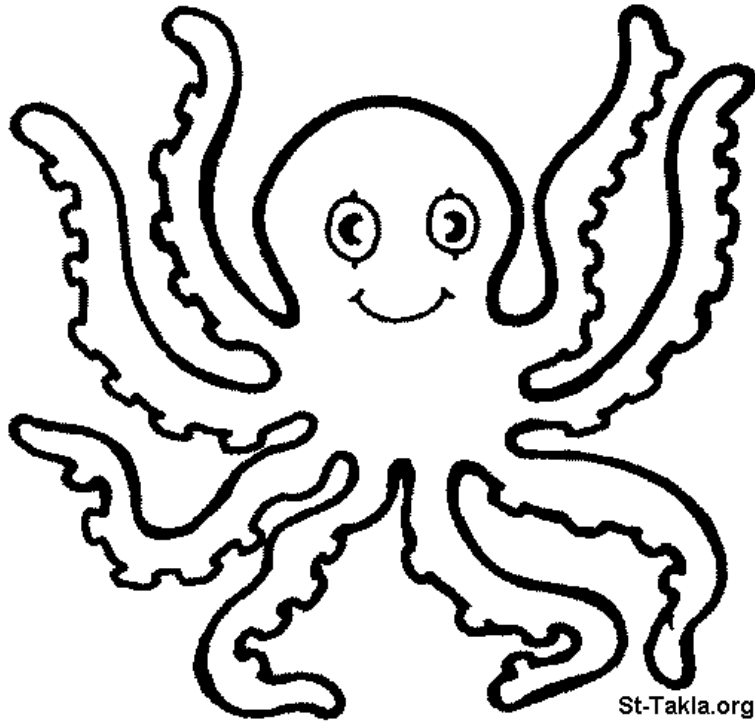


Garibaldi, [*Hypsypops rubicundus*](#)



Leopard Shark, [*Triakis semifasciata*](#)?

Tank T14, Octopus



Camera Shy – No flash, so no good pictures

Octopus, [*Octopus vulgaris*](#)

Tank T15 – Live Coral

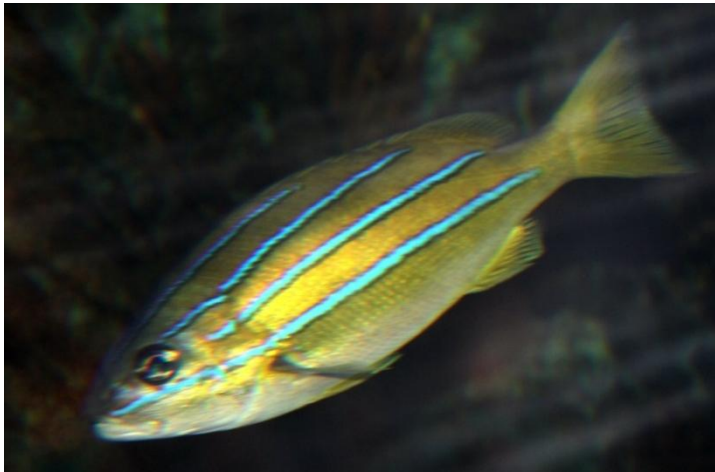


Cowfish, [*Lactoria cornuta*](#)

Tank T16 - Predators of the Reef



Blond Naso Tang, *Naso elegans*



Bluestripe Snapper, *Lutjanus kasmira*



Hawaiian Black Triggerfish, *Melichthys niger*



White-spotted Puffer, [*Arothron hispidus*](#)?

Scribbled Puffer, [*Arothron mappa*](#)?



Spotted Black Grouper, [*Epinephelus daemeli*](#)

Have not seen this fish yet.

Leopard Coral Grouper, [*Plectropomus leopardus*](#)



Pink-tailed Trigger, *Melichthys vidua*



Rectangle Triggerfish, *Rhinecanthus rectangulus*



Sabre Squirrelfish, *Sargocentron spiniferum*



Blue and Yellow Grouper, *Epinephelus flavocaeruleus*?



Yellowfin Tang, [*Acanthurus xanthopterus*](#)



White Spotted Bamboo Shark, [*Chiloscyllium plagiosum*](#)

Tank T17 – Shark Encounters – Shark Touch Pool





Epaulette Shark, [*Hemiscyllium ocellatum*](#)



White Spotted Bamboo Shark, [*Chiloscyllium plagiosum*](#)



Brownbanded Bamboo Shark, [*Chiloscyllium punctatum*](#)

Have not seen - Need Photo

Coral Catshark, [*Atelomycterus marmoratus*](#)



Yellow Spotted Stingray, [*Urobatis jamaicensis*](#)

Tank T22 – Loggerhead Sea Turtle



**RESCUING
LOGGERHEAD SEA TURTLES**

Given the chance, this little turtle in our exhibit could grow up one day to be over 3 feet long. But, because of fishing, pollution and their quickly disappearing beaches, loggerheads are endangered and fast disappearing.

Once loggerheads hatch, they can travel vast distances in the ocean. Before that they have to make the perilous journey from the sand to the water. They can be injured along the way or be thrown off course by confusing nearby lights. Once in the water they can still get swept up in the currents and brought into colder waters, where they cannot survive. As part of a head-start program with North Carolina Aquarium at Pine Knoll Shores, Mystic Aquarium is approved by the U.S. Fish & Wildlife Service to raise the hatchlings. This gives the turtles a much better chance of survival and helps us learn more about the species.

LET'S FIND OUT MORE ABOUT THIS LITTLE LOGGERHEAD

WHY A SAND CASTLE?
Mature female loggerheads often return to lay their eggs at the same beach where they hatched. This sand castle is a reminder that the same beaches we enjoy are a home for these turtles. Whether we build our homes or a fleeting sandcastle, it's important to remember that we can make a difference in the lives of these amazing creatures.

HOW BIG WILL THIS TURTLE GET?
Adult male loggerheads have been found weighing more than 350 pounds.

WHERE DO THEY LAY THEIR EGGS?
A turtle creates a nest in the sand for her eggs. Hatchlings break free from the egg at about 46 to 48 days, when they're less than 2" inches long. They quickly make their way to the water. Since the eggs need a few months to rest, it's important not to disturb the nests during that time. Before you build your castle in the sand, make sure the area doesn't already have residents!

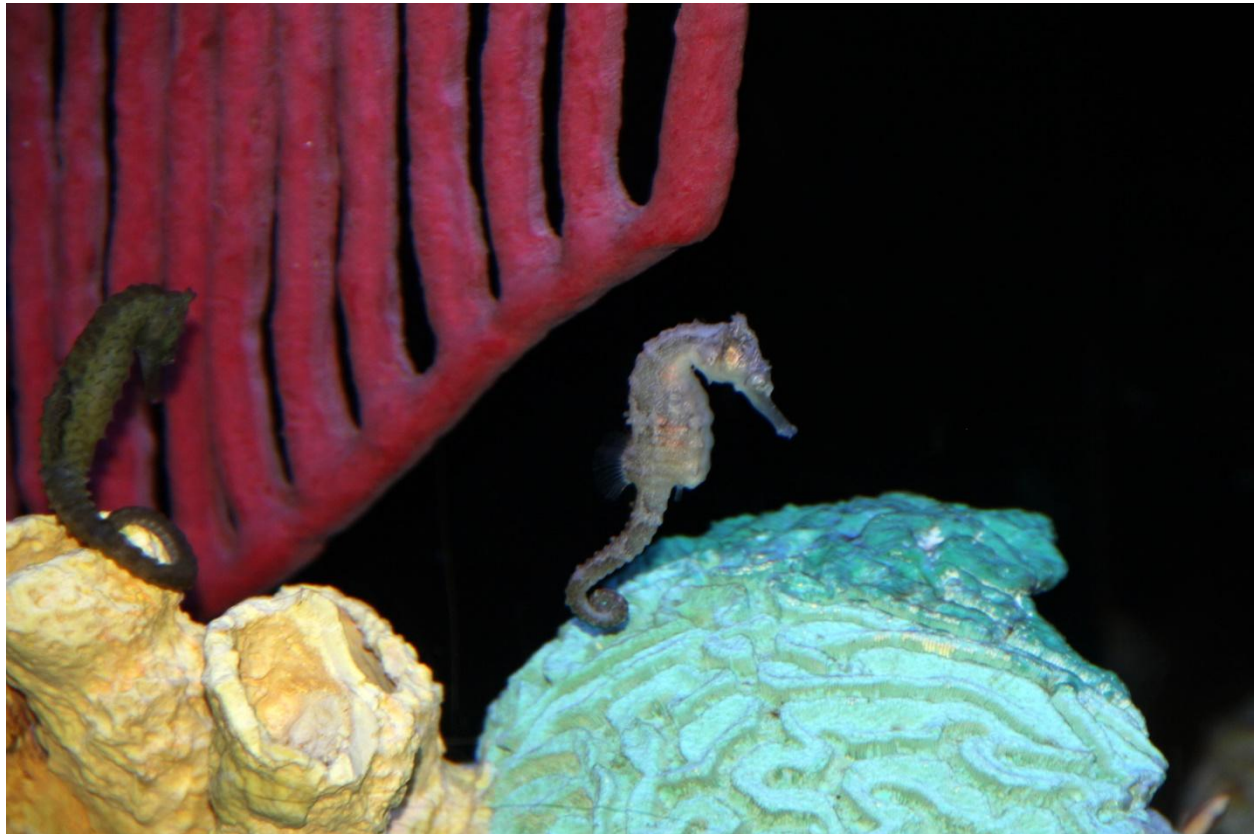
WHAT WILL IT EAT WHEN IT IS RELEASED BACK TO THE OCEAN?
In the wild, loggerheads eat shellfish, crabs and even jellyfish. But they often mistake plastic bags and balloons for jellyfish – something that we can all help stop. For starters, always use reusable shopping bags. And when you go to the beach, leave only your footprints.

WHY ARE THERE NO SMALL ROCKS OR GRASSES INSIDE THIS EXHIBIT?
Young turtles will eat just about anything, so we have to make sure we don't put anything in the exhibit that can harm them. We do whatever we can to keep them safe, so everyone can enjoy this ambassador while it is here. It is an important part of the next generation and the next chapter in the story of the loggerhead.



Loggerhead Sea Turtle, [*Caretta caretta*](#)

Tank T24 - Sea Horses





White's Seahorse, [*Hippocampus whitei*](#)

Tank T26 – Indo-Pacific Coral Reef



Blue-Ringed Angelfish, [*Pomacanthus annularis*](#)



Bluestreak Cleaner Wrasse, [*Labroides dimidiatus*](#)



Clown Coris, [*Coris aygula*](#)



Domino Damsel, [*Dascyllus trimaculatus*](#)



Emperor Angelfish, *Pomacanthus imperator*



Golden Butterflyfish, *Chaetodon semilarvatus*



Harlequin Tusk, *Choerodon fasciatus*



Heniochus Brown Butterflyfish, [*Heniochus varius*](#)



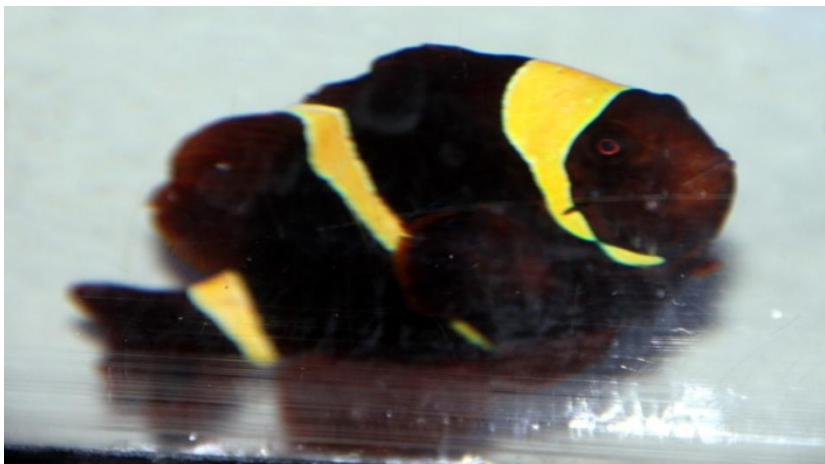
Koran (Semicircular) Angelfish, [*Pomacanthus semicirculatus*](#)



Lyretail Anthias (Female), [*Pseudanthias squamipinnis*](#)



Lyretail Anthias (Male), [*Pseudanthias squamipinnis*](#)



Maroon Clownfish, [*Premnas biaculeatus*](#)



Naso Tang, [*Naso lituratus*](#)



Oriental Sweetlips, [*Plectorhinchus vittatus*](#)



Pacific Blue or Hippo Tang (Dory), [*Paracanthurus hepatus*](#)



Picasso Triggerfish, [*Rhinocanthus aculeatus*](#)



Porcupine Puffer, [*Diodon holocanthus*](#)



Raccoon Butterflyfish, *Chaetodon lunula*



Redbelly Yellowtail Fusilier, *Caesio cuning*



Sohal Tang, *Acanthurus sohal*



Spotted Sweetlips, *Plectorhinchus chaetodonoides*



Squarespot Anthias, *Pseudanthias pleurotaenia*



Threadfin Snapper, [*Symphorichthys spilurus*](#)



Unicorn Tang, [*Naso unicornis*](#)



Yellow Tang, [*Zebrasoma flavescens*](#)

Tank T27 – Frogfish



Wartskin Frogfish, [*Antennarius maculatus*](#)

Tank DL - Discovery Lab



American Lobster, Calico, *Homarus americanus*



American Lobster, Blue, [*Homarus americanus*](#)



American Lobster, Red, [*Homarus americanus*](#)



Green Crab, [*Carcinus maenas*](#)



Horseshoe Crab, [*Limulus polyphemus*](#)



Spider Crab, *Libinia emarginata*



Winter Skate, *Leucoraja ocellata*

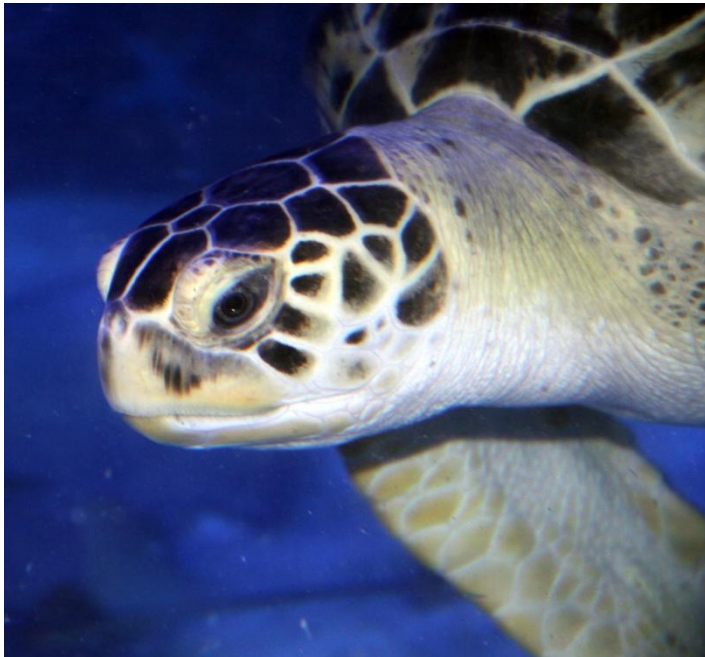
Tank North Pool – Green Sea Turtle, Rays, and Shark



Atlantic Spadefish, *[Chaetodipterus faber](#)*



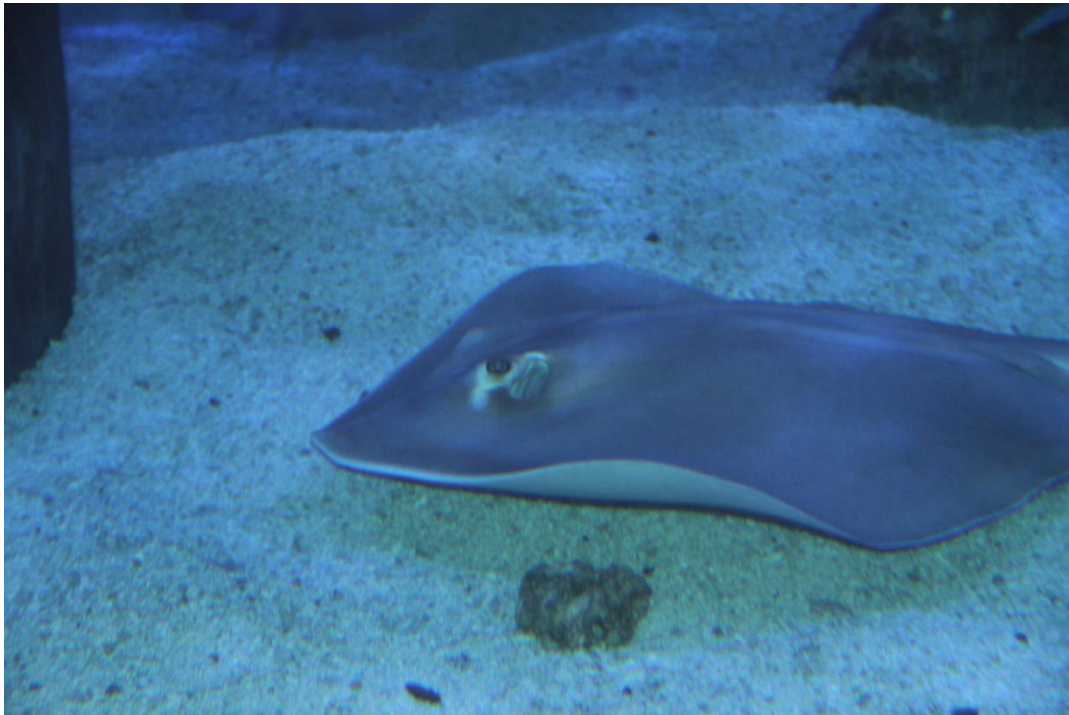
Cownose Ray, *Rhinoptera bonasus*



Green Sea Turtle (Charlotte), *Chelonia mydas*



Porkfish, *Anisotremus virginicus*



Southern Stingray, *Dasyatis Americana*



Wobbegong Shark, *Orectolobus maculatus*

Tank South Pool – Sharks



Sand Tiger Shark, *Carcharias taurus*



Nurse Shark, [*Ginglymostoma cirratum*](#)

Marine Fish Profile References

About.com: <http://saltaquarium.about.com/od/fishprofilesindex/tp/fishprofilesindex.htm>

Animal World: <http://animal-world.com/encyclo/marine/salt.htm>

Aquarium Creations Online.com:

http://www.aquariumcreationsonline.net/saltwater_fish_aquarium.html

Aquarium Domain: <http://www.aquariumdomain.com/indexMarineFish.php>

FishBase.org: <http://www.fishbase.org/>

FishLore.com: <http://www.fishlore.com/saltwaterfish.htm>

FishProfiles.com: <https://fishprofiles.com/profiles/marine/>

Florida Museum of Natural History: <https://www.flmnh.ufl.edu/fish/discover/species-profiles>

Live Aquaria: <http://www.liveaquaria.com/PIC/article.cfm?aid=296>

The Age of Aquariums:

http://www.aquahobby.com/e_saltwater_marine_aquarium_fish.php